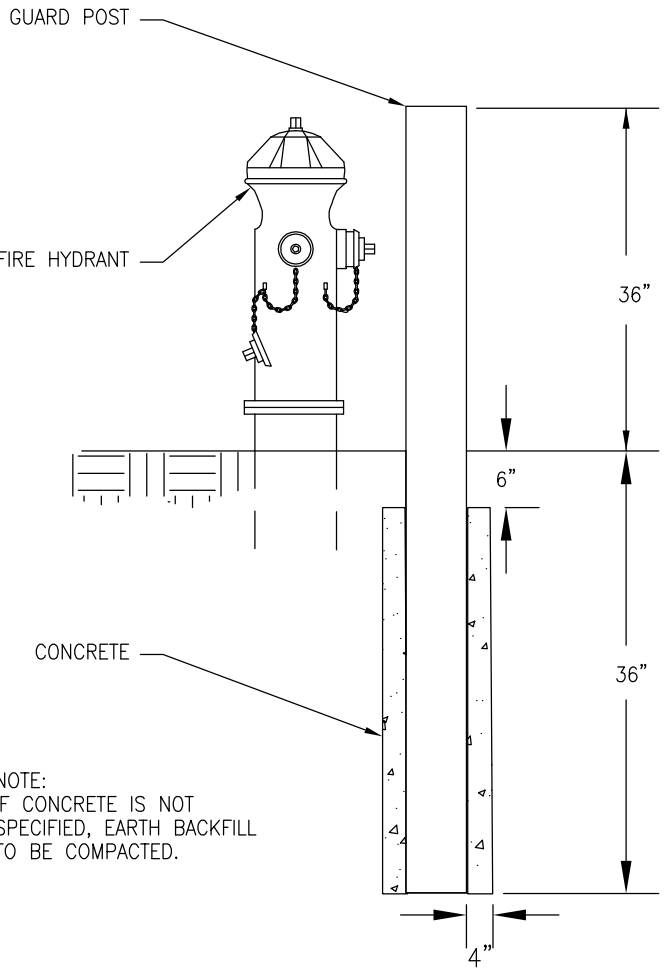
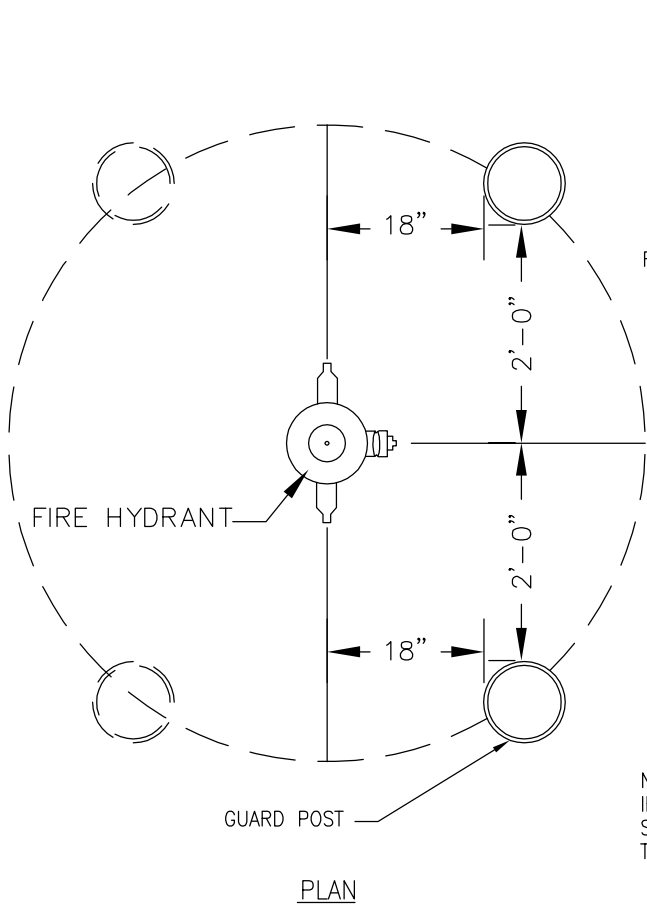


9" ROUND REINFORCED CONCRETE GUARD POST, 6'-0" LONG MIN. EQUAL TO RENTON CONCRETE PRODUCTS OR 6" DIAMETER DUCTILE IRON PIPE FILLED WITH CONCRETE. INSTALLED ONLY WHERE DIRECTED.



NOTE:
IF CONCRETE IS NOT SPECIFIED, EARTH BACKFILL TO BE COMPACTED.

NOTES:

1. WHERE FACE OF CURB IS LESS THAN 3 FEET FROM CENTER OF HYDRANT, INSTALL MINIMUM 2 AND UP TO 4. INSTALL GUARD POST AS DIRECTED.
2. LOCATE GUARD POSTS AS SHOWN ON DRAWINGS OR AS DIRECTED BY DISTRICT. DO NOT BLOCK ACCESS TO PORTS.
3. PAINT THE ABOVE GROUND PORTION WITH 2 COATS OF OLD CAT YELLOW RUST-OLEUM 7448402, MILLER PAINTS 12LW0239 OR EQUAL.
4. HYDRANT GUARD POSTS SHALL BE DIRECT BURY.
5. GUARD POSTS ARE INTENDED TO PROTECT HYDRANT FROM SPEEDS LESS THAN 25 MPH, SUCH AS RESIDENTIAL STREETS & PARKING LOTS



HYDRANT GUARD POSTS

DATE: 05-2017

DWG. WD-17

APPROVED BY: _____ DLH _____
DISTRICT ENGINEER