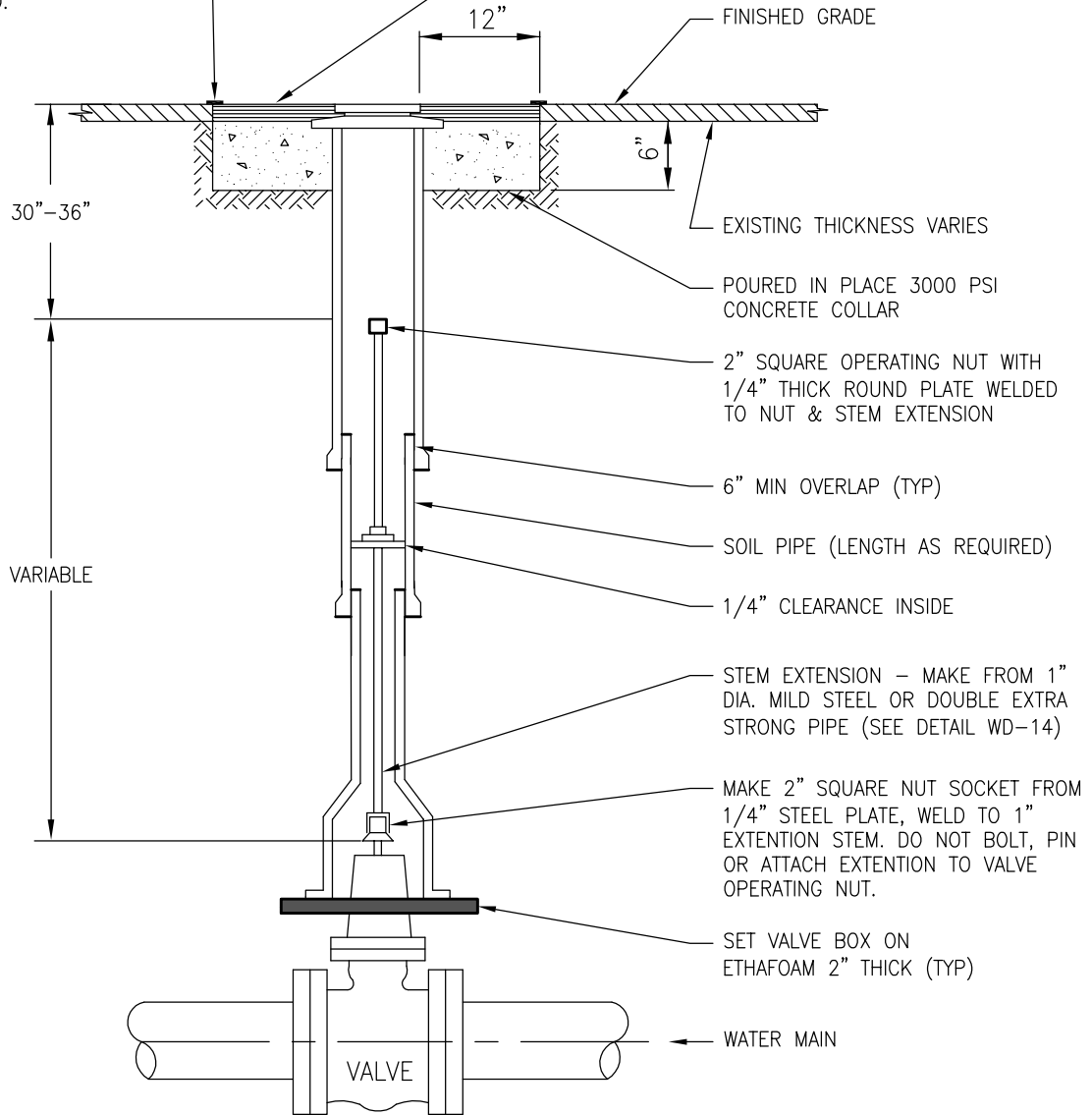


CLEAN AND TACK CONCRETE SURFACE AND EDGES WITH WITH SEALER CSS1 AND SEAL JOINTS WITH HOT ASPHALT CEMENT (AR4000W). SAND AFTER SEALANT IS APPLIED.

MATCH EXISTING PAVEMENT THICKNESS OR 3" MIN. DEPTH, 1/2" HMA ASPHALT PATCH SEE DETAIL TBR-6.



VARIABLE

FINISHED GRADE

EXISTING THICKNESS VARIES

POURED IN PLACE 3000 PSI CONCRETE COLLAR

2" SQUARE OPERATING NUT WITH 1/4" THICK ROUND PLATE WELDED TO NUT & STEM EXTENSION

6" MIN OVERLAP (TYP)

SOIL PIPE (LENGTH AS REQUIRED)

1/4" CLEARANCE INSIDE

STEM EXTENSION - MAKE FROM 1" DIA. MILD STEEL OR DOUBLE EXTRA STRONG PIPE (SEE DETAIL WD-14)

MAKE 2" SQUARE NUT SOCKET FROM 1/4" STEEL PLATE, WELD TO 1" EXTENSION STEM. DO NOT BOLT, PIN OR ATTACH EXTENSION TO VALVE OPERATING NUT.

SET VALVE BOX ON ETHAFOAM 2" THICK (TYP)

← WATER MAIN

VALVE

CSS1= CATIONIC SLOW SETTING TYPE 1  
AR4000W= ASPHALT RUBBER TYPE 4000W  
HMA= HOT MIX ASPHALT

NOTES:

1. VALVE BOX SHALL BE ALIGNED AND CLEANED TO ENSURE PROPER VALVE OPERATION.
2. DEFECTIVE OR NON STANDARD VALVE BOX COMPONENTS SHALL BE REPLACED WITH NEW CURRENT DISTRICT STANDARD.
3. PAVEMENT RESTORATION IN ACCORDANCE WITH JURISDICTIONAL AUTHORITY AND DIVISION 7.
4. IF OPERATING NUT IS MORE THAN 3 FEET BELOW GRADE AFTER ADJUSTMENT SEE DETAIL WD-14.



VALVE BOX ADJUSTMENT

DATE: 05-2017

DWG. WD-15

APPROVED BY: DLH  
DISTRICT ENGINEER