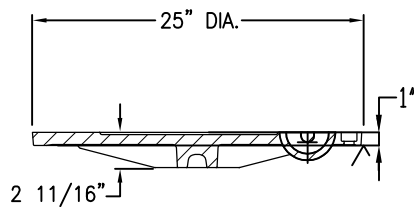
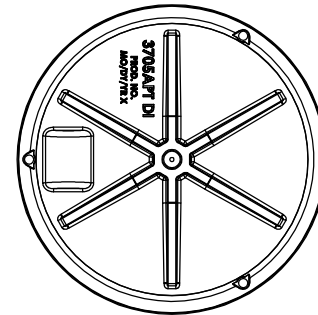


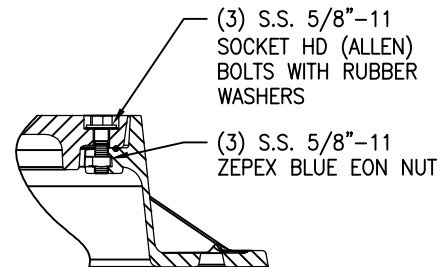
**PLAN VIEW**



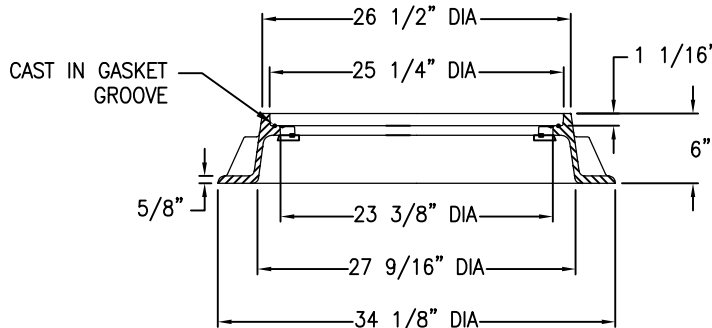
**COVER SECTION**



**BOTTOM VIEW**



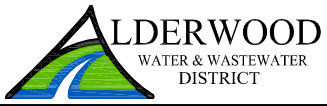
**BOLT DETAIL**



**FRAME SECTION**

**NOTES**

1. MATERIALS ARE DUCTILE IRON COVER ASTM A536, AND GRAY IRON IRON FRAME ASTM A48 CL35B PRODUCT# 3715ZPT.
2. MANUFACTURED IN THE USA BY EAST JORDAN IRON WORKS MANUFACTURING CO. HEAVY DUTY MANHOLE ASSEMBLY (H20 AND HS20 LOADINGS) OR APPROVED EQUAL.
3. MANHOLES LOCATED WITHIN NON-PAVED AREAS SHALL REQUIRE THE INSTALLATION OF GREEN FIBERGLASS MARKER POSTS 5' IN LENGTH WITH DECAL STATING "CAUTION SEWER PIPELINE". THE BURIED END SHALL BE "BARBED" OR AN ANCHOR KIT SHALL BE USED. INSTALL A CONCRETE COLLAR 6' DIAMETER 6" THICK UNLESS OTHERWISE DIRECTED BY THE DISTRICT.
4. 3/4" STRIP OF CONSEAL CD-101 MANHOLE RING AND COVER SEALANT REQUIRED BETWEEN COVER AND FRAME WHERE MANHOLE IS SUSCEPTIBLE TO INUNDATION OR THERE IS THE POTENTIAL FOR EXCESSIVE ODORS OR AS DIRECTED BY THE DISTRICT.
5. IN SIDEWALKS, RAMPS OR CROSSWALKS USE LID COMPLIANT TO AMERICANS WITH DISABILITIES ACT REQUIREMENTS.
6. SEE DETAIL TBR-6 FOR ADJUSTMENT DETAILS.

	
<b>MANHOLE FRAME AND COVER</b>	
DATE: 11-2015	DWG. S-5
APPROVED BY: _____ DLH _____ DISTRICT ENGINEER	